



KubeCon



CloudNativeCon

Europe 2020

Virtual

DevOps Patterns & Antipatterns for Continuous Software Updates

Kat Cosgrove

Kat Cosgrove

IoT Engineer

Developer Advocate

@Dixie3Flatline

katc@jfrog.com

jfrog.com/shownotes



Why do we update software?

```
↳ bc -v
```

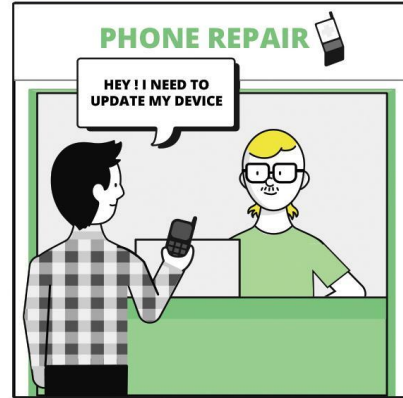
```
bc 1.06
```

```
Copyright 1991-1994, 1997, 1998, 2000 Free Software Foundation, Inc.
```

GIMME



LATE 1990s



@dixie3flatline

#LiquidSoftware

#KubeCon

<http://jfrog.com/shownotes>

An aerial photograph of an oil field at dusk or dawn. The ground is dark and textured with tire tracks. Several yellow pumpjacks are visible, each with a long walking beam and a counterweight. The scene is lit with a warm, golden light. In the center, there is a large green text overlay with a white outline. The text reads: "AS EVERY COMPANY BECOME A SOFTWARE COMPANY, SECURITY VULNERABILITIES ARE THE NEW OIL SPILLS".

**“AS EVERY COMPANY BECOME A SOFTWARE COMPANY,
SECURITY VULNERABILITIES ARE THE NEW OIL SPILLS”**

@dixie3flatline

#LiquidSoftware

#KubeCon

<http://jfrog.com/shownotes>

20 - 6m - 6m -
MPH 12m (40 Feet)

30 - 9m - 14m -
MPH 23m (75 Feet)

40 - 12m - 24m -
MPH 36m (118 Feet)


50 - 15m - 38m -
MPH 53m (174 Feet)

60 - 18m - 55m -
MPH 73m (240 Feet)

70 - 21m - 75m -
MPH 96m (315 Feet)

Stopping Distances

Key



Thinking Distance Braking Distance

Formula

Thinking Distance + Braking Distance = Stopping Distance


```
graph LR; Identify --> Fix; Fix --> Deploy
```

Identify

Fix

Deploy

@dixie3flatline

#LiquidSoftware

#KubeCon


<http://jfrog.com/shownotes>

Security

UK hospital meltdown after ransomware worm uses NSA vuln to raid IT

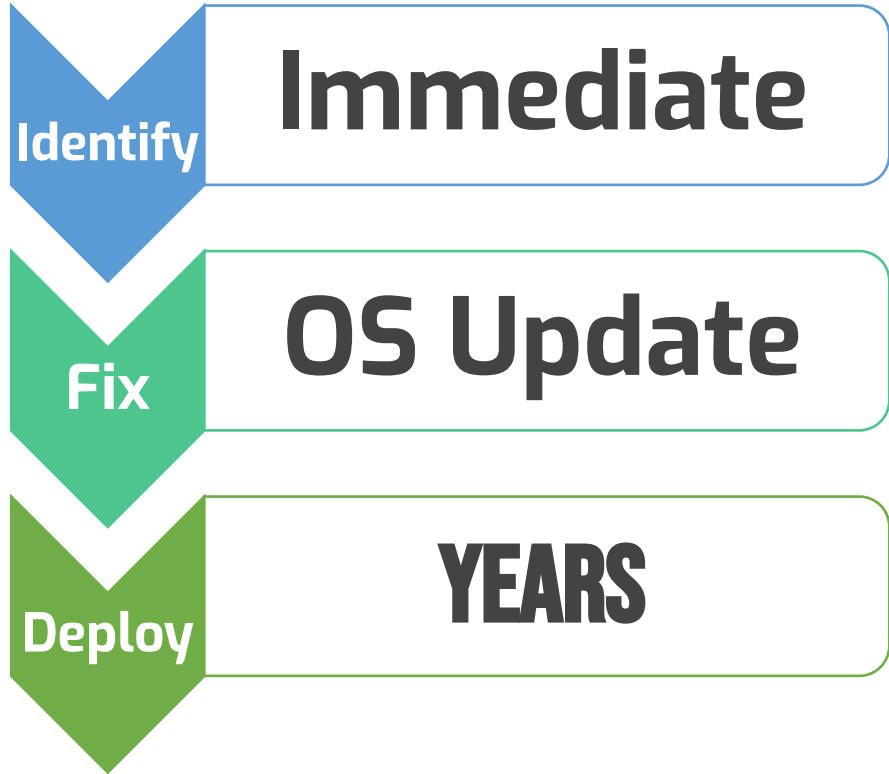
Docs use pen and paper after computers scrambled amid global outbreak

By [Kat Hall](#) 12 May 2017 at 14:22

339  SHARE ▼



Final update UK hospitals have effectively shut down and are turning away non-emergency patients after ransomware ransacked its networks.



Security

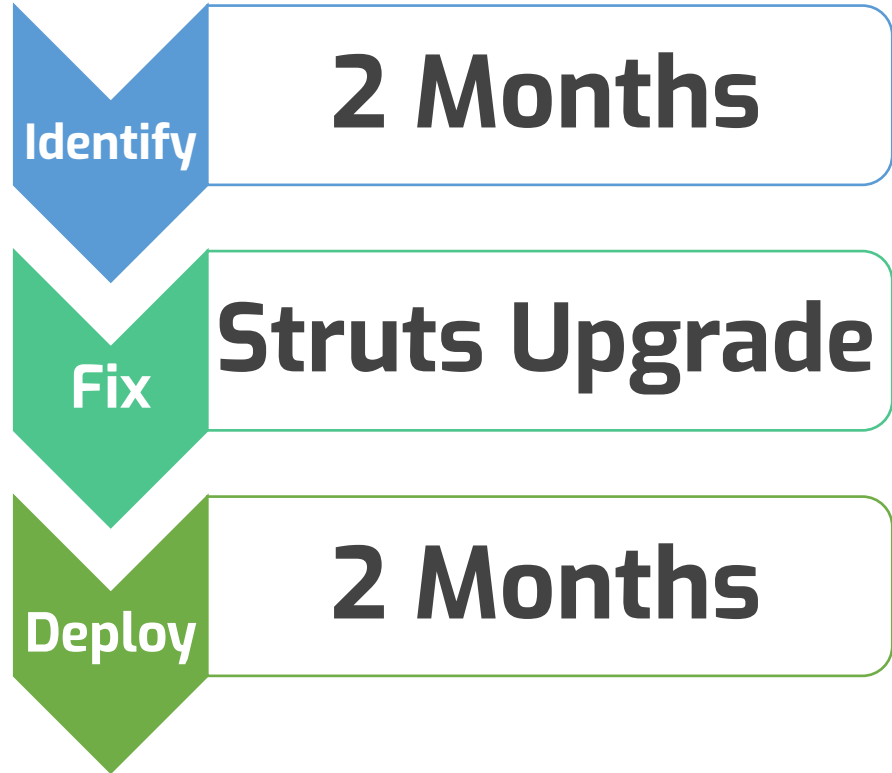
Stand up who HASN'T been hit in the Equifax mega-hack – whoa, whoa, sit down everyone

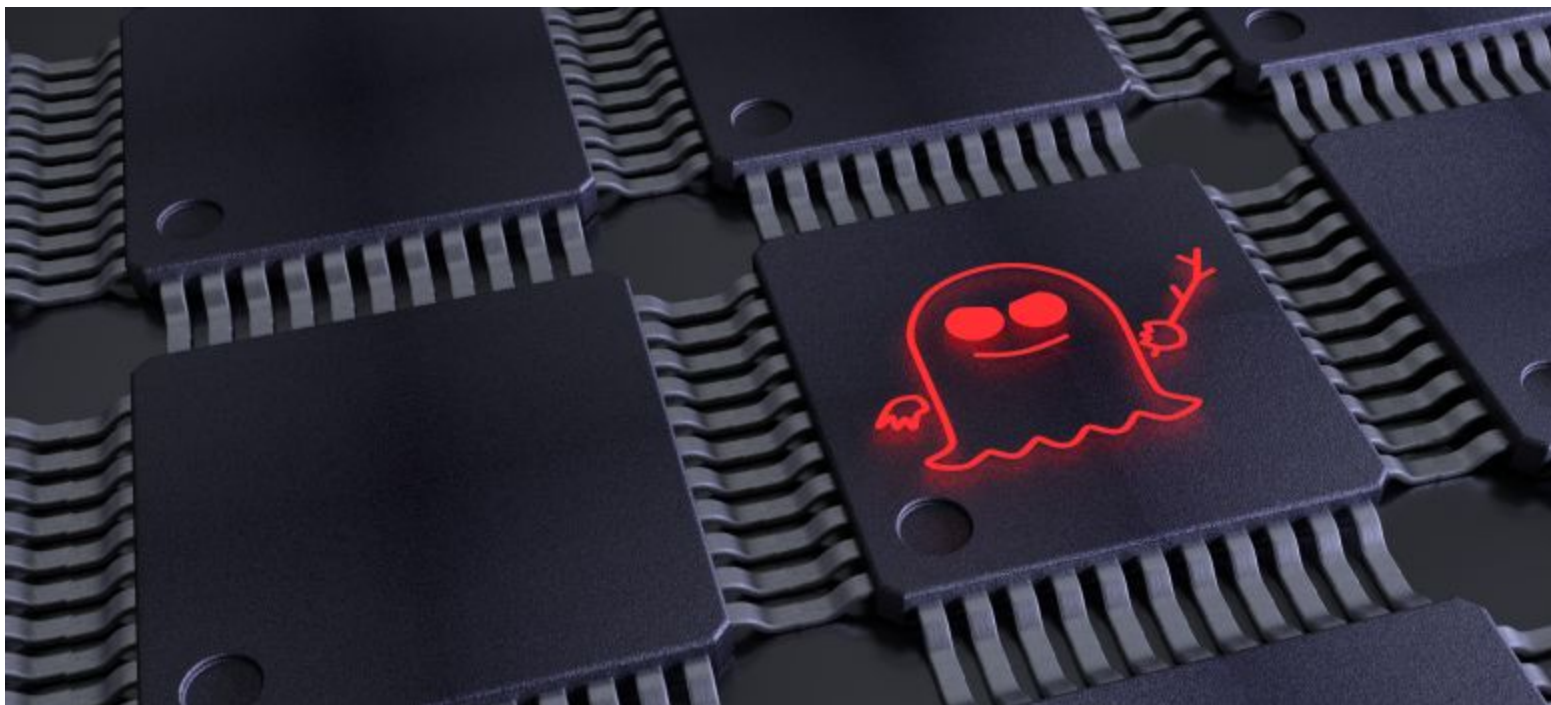
143m in US, unknown number in UK, Canada – gulp!

By [Iain Thomson](#) in San Francisco 7 Sep 2017 at 22:11



Vid Global credit reporting agency Equifax admitted today it suffered a massive breach of security that could affect almost half of the US population.





@dixie3flatline

#LiquidSoftware

#KubeCon

<http://jfrog.com/shownotes>

Chips may be inherently vulnerable to Spectre and Meltdown attacks

Most malware exploits coding errors and poor design. But Google security researchers say a fundamental flaw in the nature of computing could make some threats impossible to defeat.

by **Emerging Technology from the arXiv**

Feb 25, 2019

Chips may be inherently vulnerable to Spectre and Meltdown attacks

Most malware exploits coding errors and poor design. But Google security researchers say a fundamental flaw in the nature of computing could make **some threats impossible to defeat.**

by **Emerging Technology from the arXiv**

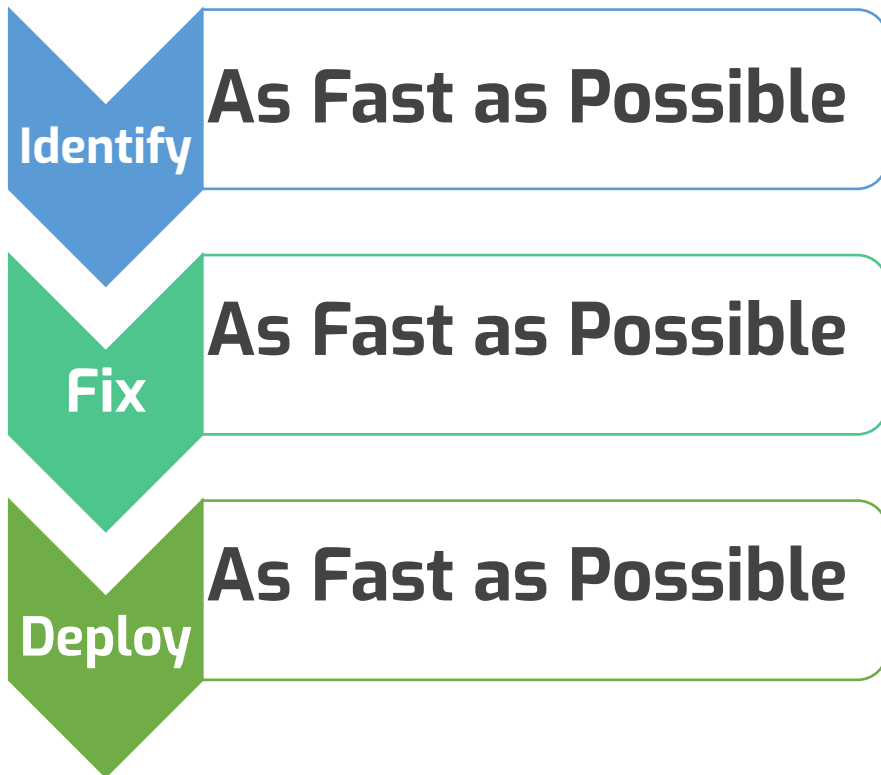
Feb 25, 2019

Chips may be inherently vulnerable to Spectre and Meltdown attacks

Most malware exploits coding errors and poor design. But Google security researchers say a fundamental flaw in the nature of computing could make some threats impossible to defeat.

by **Emerging Technology from the arXiv**

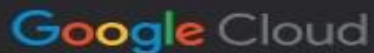
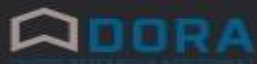
Feb 25, 2019



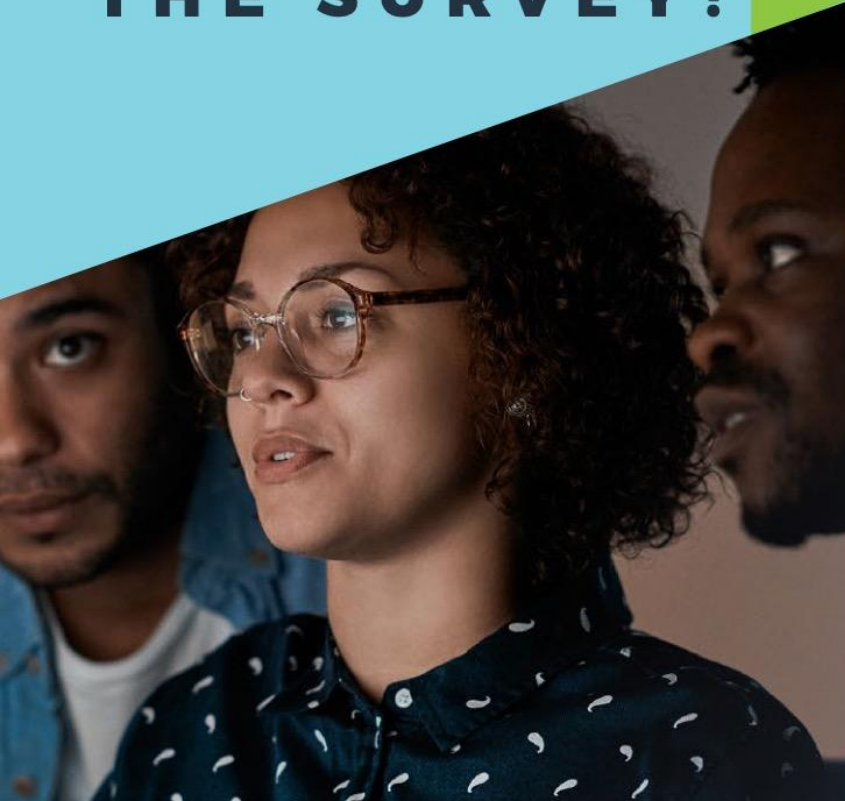


ACCELERATE
State of DevOps
2019

Sponsored by



WHO TOOK THE SURVEY?



DORA's research provides insight into software development and DevOps practices applied in industry, backed by scientific studies spanning six years with **over 31,000 survey responses** from working professionals. This year, almost 1,000² individuals from a range of industries around the world added their voices to the 2019 Report. Overall, we see similar representation across key demographic and firmographic measures when compared to last year, other than a noticeable drop in the reported percentage of women on teams.

20%

ELITE
PERFORMERS

23%

HIGH
PERFORMERS

44%

MEDIUM
PERFORMERS

12%

LOW
PERFORMERS

Aspect of Software Delivery Performance*

Elite

Deployment frequency

For the primary application or service you work on, how often does your organization deploy code to production or release it to end users?

On-demand
(multiple
deploys per day)

This is not a new idea!

- **XP:** short feedback
- **Scrum:** reducing cycle time to absolute minimum
- **TPS:** Decide as late as possible and Deliver as fast as possible
- **Kanban:** Incremental change

Gotta go
FAST



RECOVER

There's not a moment to lose!

Mark Reinhold

Moving Java Forward Faster

2017/09/06 07:49:28 -07:00

The State of Java: Trends And Data For One of the World's Most Popular Programming Languages



By Ben Evans · Mar. 13th, 2020 · Technology Industry

Java, programming languages, trends

...

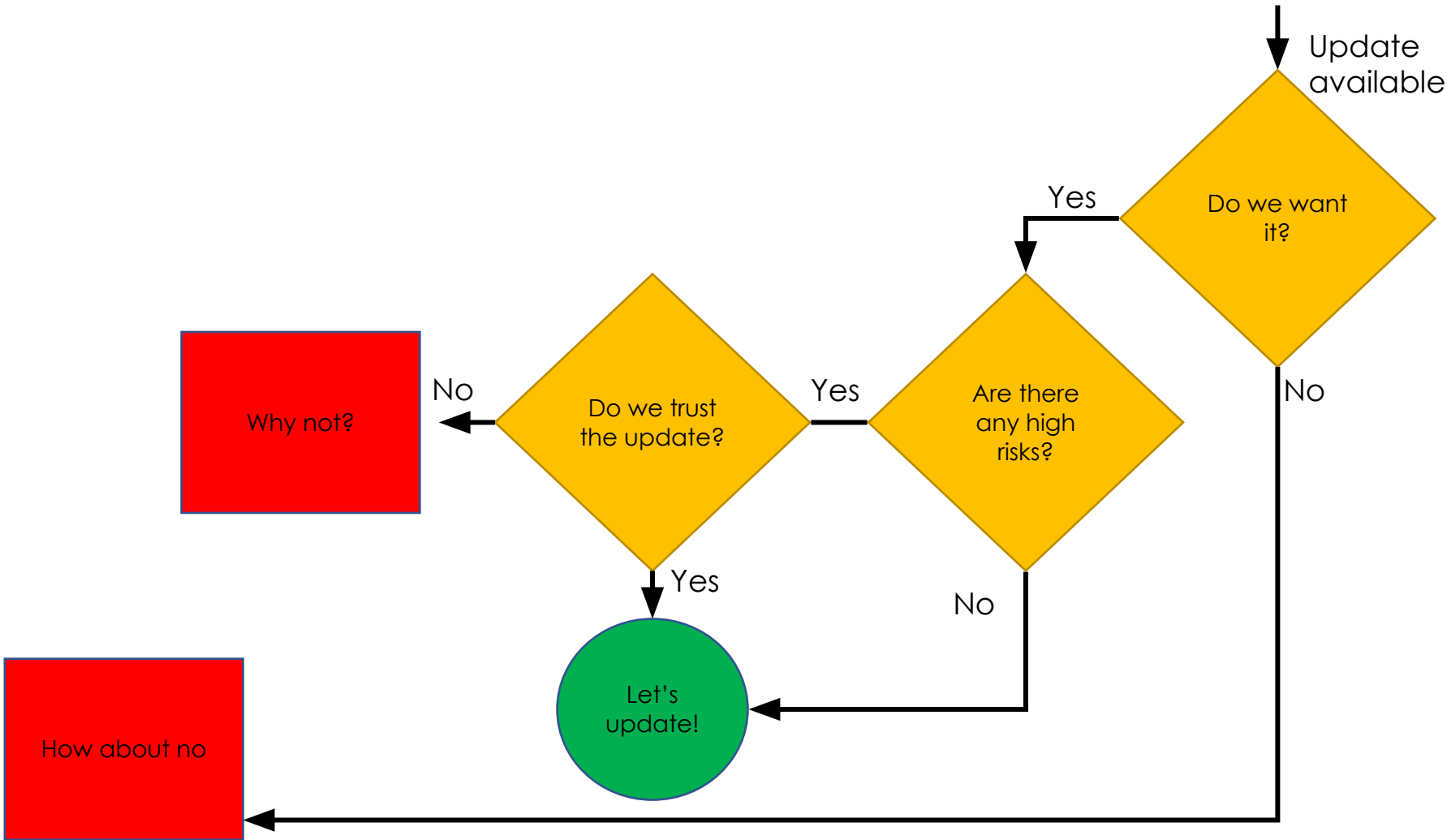
Java 8 is still the standard—for now

Let's start with the one question Java developers are always curious about: Which versions are most used in production environments? Consider the following table:

Java version	% in use
14	0.00
13	0.32
12	0.17
11	11.11
10	0.48
9	0.18
8 Current	42.02
8 Lagging	38.63
8 Vulnerable	3.83
7	2.54
pre-7	0.73
Non-LTS	1.14

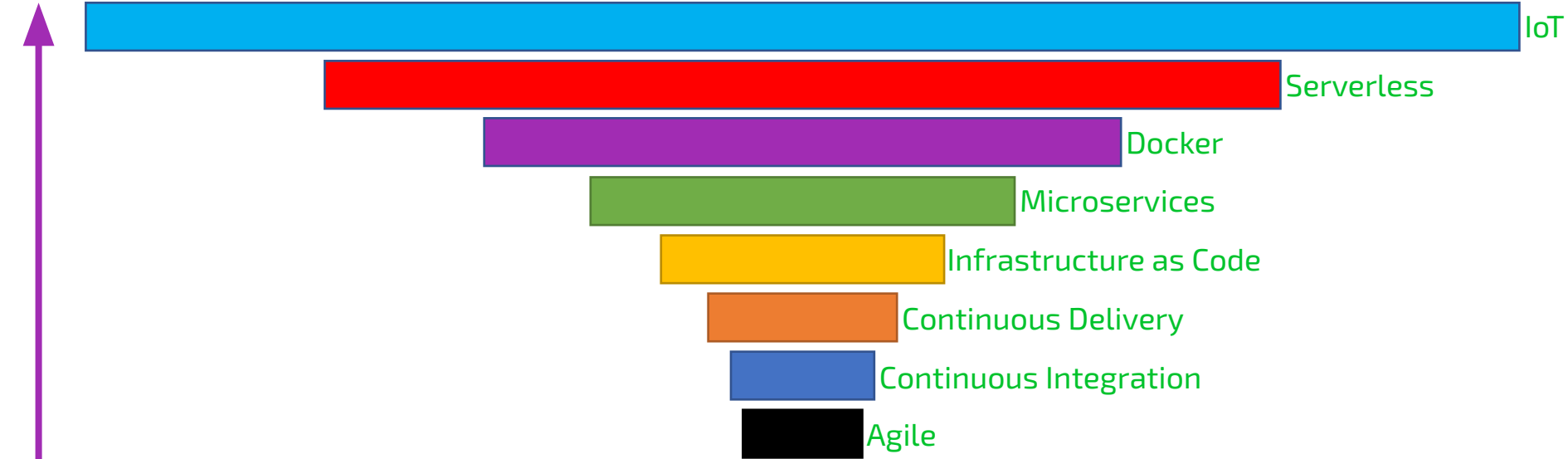


**How do we
update?**



NUMBER OF ARTIFACTS AS A SYMPTOM OF COMPLEXITY

Today



2000

@dixie3flatline

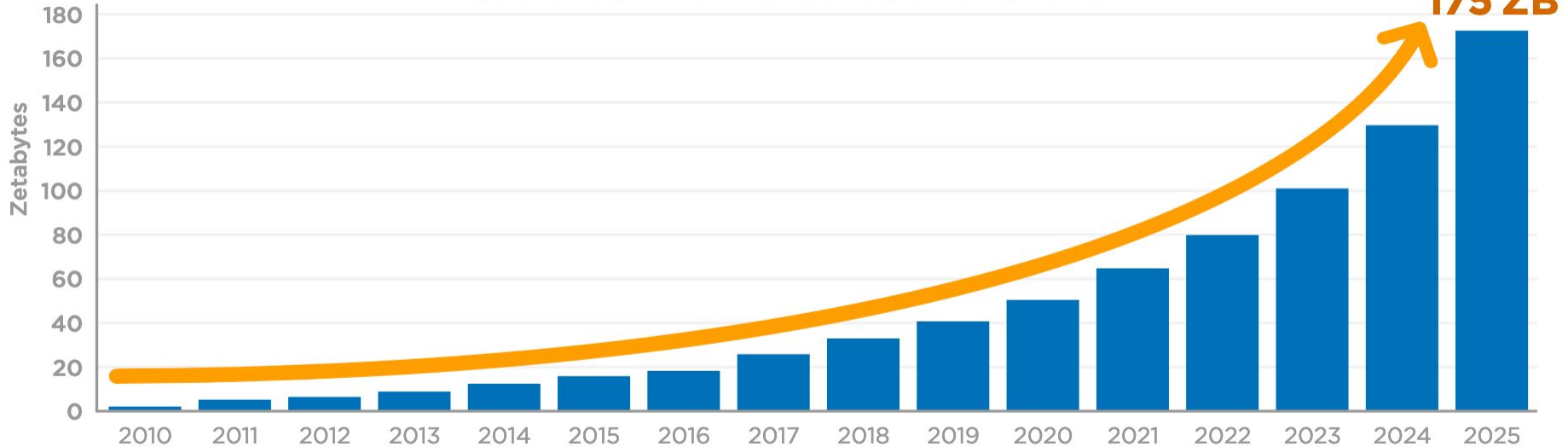
#LiquidSoftware

#KubeCon

<http://jfrog.com/shownotes>

THE PROBLEM IS NOT THE CODE, IT'S THE DATA. BIG DATA.

Annual Size of the Global Datasphere



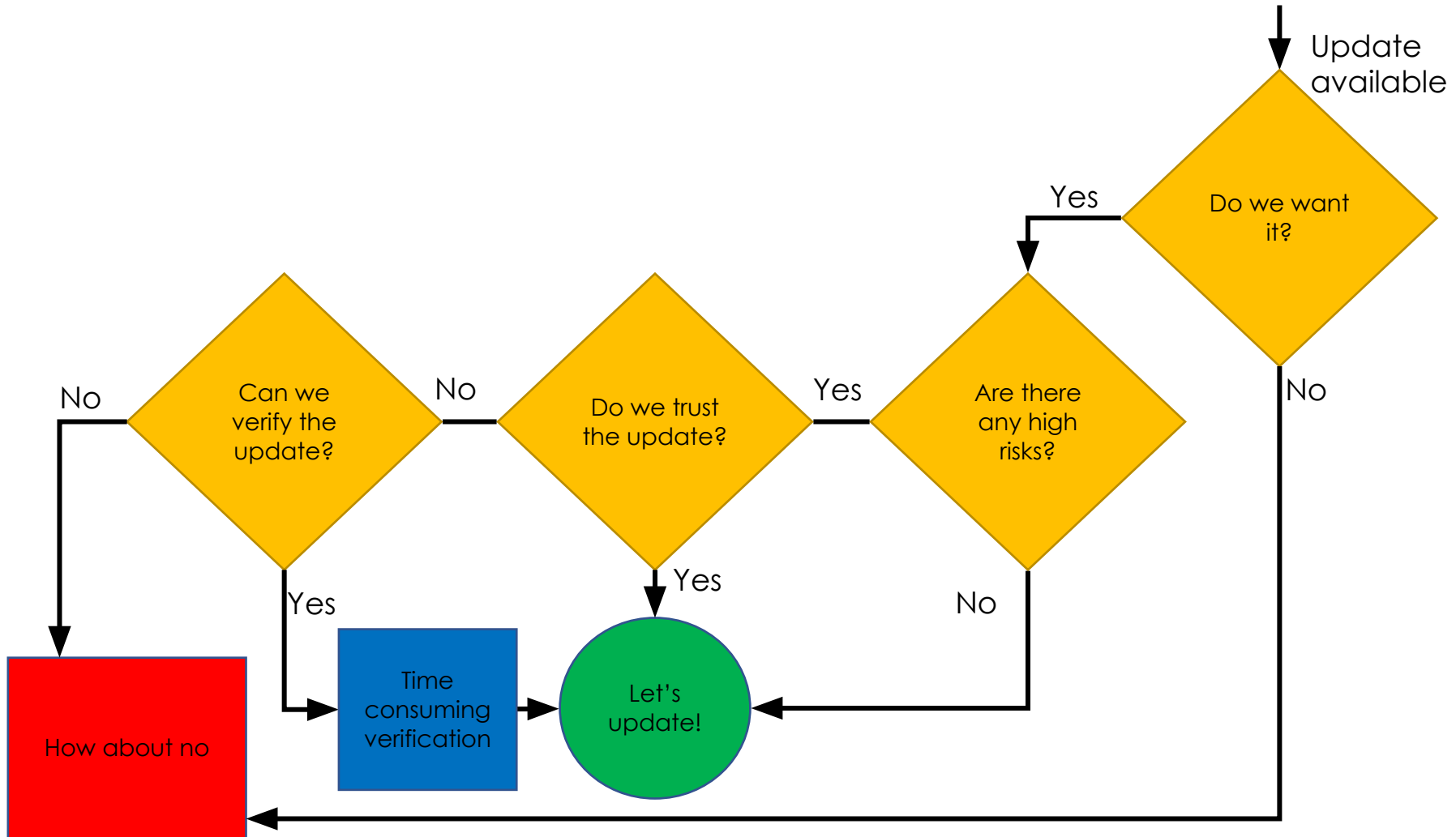
Source: Data Age 2025, sponsored by Seagate with data from IDC Global DataSphere, Nov 2018

@dixie3flatline

#LiquidSoftware

#KubeCon

<http://jfrog.com/shownotes>



Features
that we
want



Acceptance
tests costs

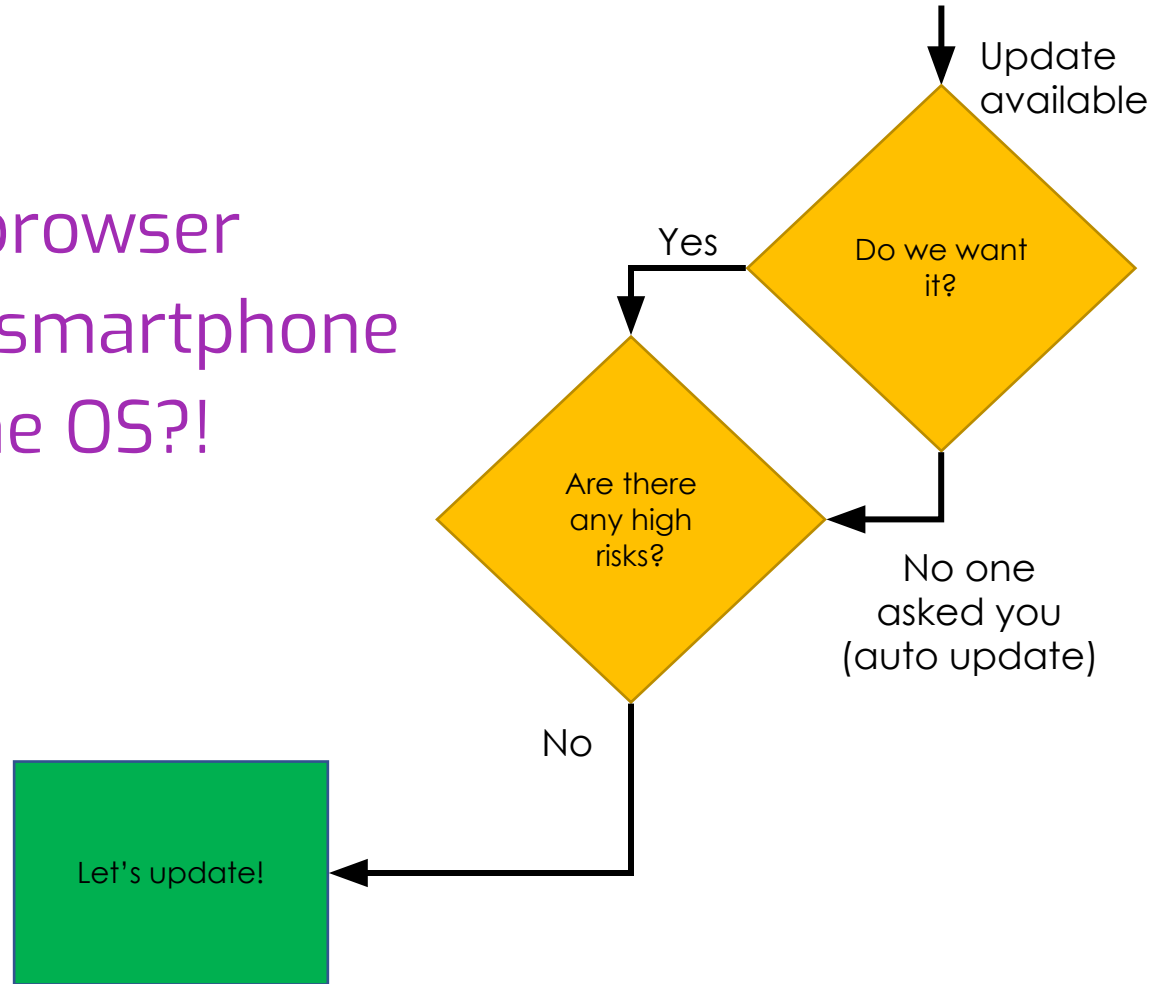


B

A

Start

- Your browser
- Twitter in your browser
- Twitter on your smartphone
- Your smartphone OS?!



**What could possibly go
wrong?**



LEARN MORE ABOUT THE APP >

FEATURES

APP

SUPPORT

BLOG

A self-improving system.

From the moment you activate it, OnHub automatically starts learning and improving itself so you'll always have optimal Wi-Fi performance. Plus, it stays current with the latest changes in device software or security, making it compatible with new devices.

@dixie3flatline

#LiquidSoftware

#KubeCon

<http://jfrog.com/shownotes>

Google Wifi

Sincerest Apologies for any Issues

Dear Google Wifi & OnHub customers,

Today we experienced an issue with our Google Accounts engine that may have affected your Google Wifi and OnHub devices. This caused some devices to automatically reset to the initial state you bought them in and they will unfortunately need to be set up again. This has not affected the software or performance of the device but it does need to be re-setup.

Visit this [dedicated support page](#) for more information and step-by-step instructions to get back online. If you set up your Wi-Fi with the same network name and password as before, your household connected devices should automatically reconnect.

If you do not want to set up the devices right now, you can always connect to the setup Wi-Fi network – the network name and password are printed on the base of your primary device (the one wired to the modem). This should get you connected to the internet immediately.

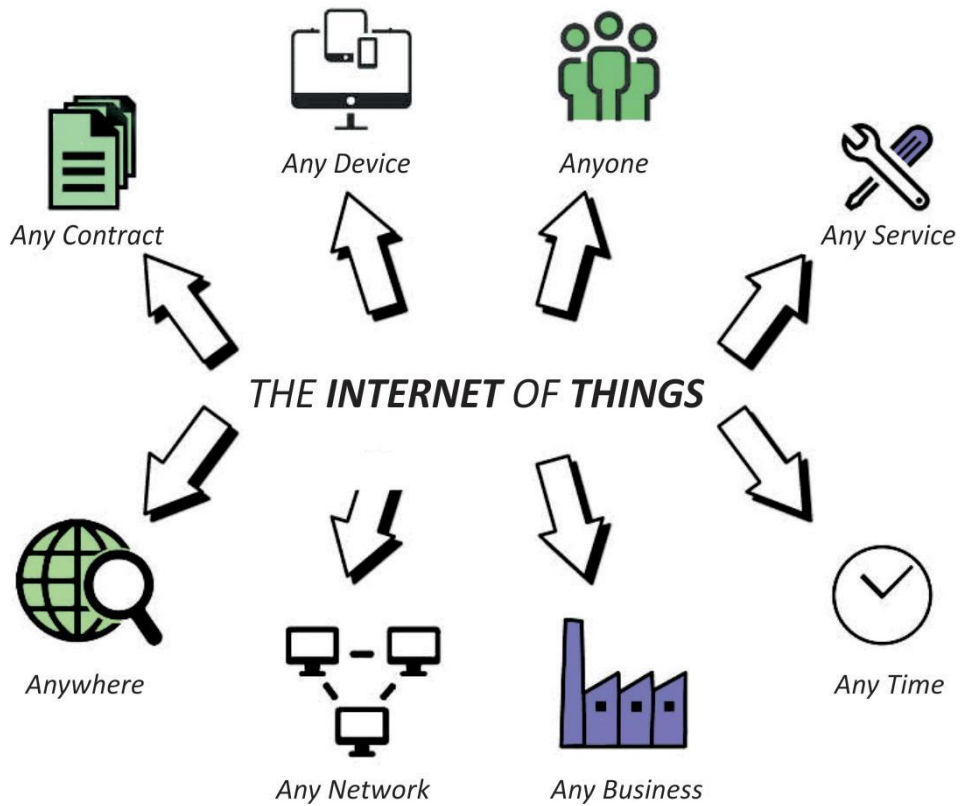
We know how important Wi-Fi is to you and share our sincerest apologies for the inconvenience this has caused.

Ben Brown On behalf of the Google Wifi and OnHub team

Continuous updates pattern: Local Rollback

- **Problem:** update went catastrophically wrong and an over the-air patch can't reach the device
- **Solution:** Have a previous version saved on the device prior to update. Rollback in case problem occurred





Jaguar I-PACE Recalled, Needs Software Update To Fix Regenerative Brakes



JUN 08, 2019 at 9:20AM



By: Mark Kane

Lack of over-the-air updates forces Jaguar to conduct an ordinary recall of the I-PACE to solve a software issue related to a regenerative brake system failure.

Continuous updates pattern: OTA Software Updates

- **Problem:** physical recalls are costly. Extremely costly. Also, you can't force an upgrade.
- **Solution:** Implement over the air software updates, preferably, continuous updates.

**Continuous OTA updates are like normal OTA updates,
but better**

Sudden and erratic braking on autopilot | Tesla

<https://forums.tesla.com/forum/forums/sudden-and-erratic-braking-autopilot> ▼

Feb 27, 2019 - 51 posts - 34 authors

I have recently encountered a few incidents where my model x **suddenly brakes** while on **auto pilot** on the highway with no reason that I can ...

- [Car **suddenly** slamming on **brakes** while **auto pilot**](#) 43 posts May 8, 2018
- [Shadow Braking during **Autopilot** still an issue?](#) 51 posts Mar 10, 2019
- [Autopilot braking **suddenly** when no car present in front](#) 7 posts Sep 12, 2018



106

Posted by u/dellfanboy  Owner Model 3 LR 4 months ago

Phantom braking! Let's talk about it

General

So now that Navigate on Autopilot without input is being released, can we talk about phantom braking?

I'm on 2019.8.3 and the issue happened twice on a 2 hour drive. The first time, wasn't related to an overpass and the second was overpass related. Both times scared my passengers and I had to just turn it off for the rest of the ride.

Am I the only person who only uses autopilot driving solo due to phantom braking? Tesla needs to fix this ASAP.

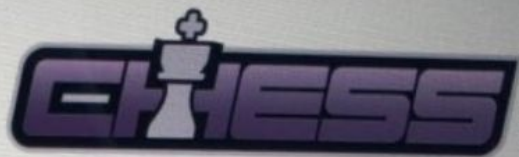
 79 Comments  Give Award  Share  Save  Hide  Report



What's New in This Update

Chess

Play Chess against your passenger or challenge four different levels of artificial intelligence. Move by dragging and dropping the chess piece during your turn.



As with all Tesla Arcade games, you can play when your car is in PARK by tapping the Application Launcher, then tap the Arcade icon and select your desired game from the menu.

Media Volume Improvements

To make it easier to speak when dropping off or picking up passengers, music volume will be lowered when any door is opened.

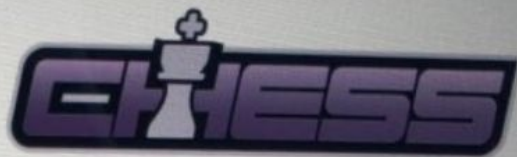
This release contains minor improvements and bug fixes.



What's New in This Update

Chess

Play Chess against your passenger or challenge four different levels of artificial intelligence. Move by dragging and dropping the chess piece during your turn.



As with all Tesla Arcade games, you can play when your car is in PARK by tapping the Application Launcher, then tap the Arcade icon and select your desired game from the menu.

Media Volume Improvements

To make it easier to speak when dropping off or picking up passengers, music volume will be lowered when any door is opened.

This release contains minor improvements and bug fixes.

Continuous updates pattern: Continuous Updates

- **Problem:** In batch updates, important features wait for unimportant features.
- **Solution:** Implement continuous updates.

You thought your problems were hard?

THINGS UNDER YOUR CONTROL

SERVER-SIDE UPDATES

**IOT (MOBILE, AUTOMOTIVE,
EDGE) UPDATES**

@dixie3flatline

#LiquidSoftware

#KubeCon

<http://jfrog.com/shownotes>

You thought your problems were hard?

THINGS UNDER YOUR CONTROL	SERVER-SIDE UPDATES	IOT (MOBILE, AUTOMOTIVE, EDGE) UPDATES
The availability of the target	✓	✗

You thought your problems were hard?

THINGS UNDER YOUR CONTROL	SERVER-SIDE UPDATES	IOT (MOBILE, AUTOMOTIVE, EDGE) UPDATES
The availability of the target	✓	✗
The state of the target	✓	✗

You thought your problems were hard?

THINGS UNDER YOUR CONTROL	SERVER-SIDE UPDATES	IOT (MOBILE, AUTOMOTIVE, EDGE) UPDATES
The availability of the target	✓	✗
The state of the target	✓	✗
The version on the target	✓	✗

You thought your problems were hard?


THINGS UNDER YOUR CONTROL	SERVER-SIDE UPDATES	IOT (MOBILE, AUTOMOTIVE, EDGE) UPDATES
The availability of the target	✓	✗
The state of the target	✓	✗
The version on the target	✓	✗
The access to the target	✓	✗

Software

How one bad algorithm cost traders \$440m

A look at the worst software testing day ever

By [Dan Olds](#), [OrionX](#) 3 Aug 2012 at 09:32

118  SHARE ▼



Knight Capital, a firm that specialises in executing trades for retail brokers, took \$440m in cash losses Wednesday due to a faulty test of new trading software. This morning reports were calling it a trading "glitch", which isn't nearly as accurate as the term I'd use: "f**king disaster".

KNIGHT-MARE

- New system reused old APIs
- 1 out of 8 servers was not updated
- New clients sent requests to machine contained old code
- Engineers removed working code from updated servers, increasing the load on the un-updated server
- No monitoring, no alerting, no debugging

Continuous updates pattern: Automated Deployment

- **Problem:** People suck at repetitive tasks.
- **Solution:** Automate everything.

Continuous updates pattern: Frequent Updates

- **Problem:** Seldom deployments generate anxiety and stress, leading to errors.
- **Solution:** Update frequently to develop skill and habit.

Continuous updates pattern: State awareness


- **Problem:** Target state can affect the update process and the behavior of the system after the update.
- **Solution:** Know and consider target state when updating. Reverting might require reverting the state.

Data Centre ▶ **Cloud**

Cloudflare gave everyone a 30-minute break from a chunk of the internet yesterday: Here's how they did it

DevOps-tating automation cockup... or machines trying to take over the web? *El Reg* talks to the CTO

By [Richard Speed](#) 3 Jul 2019 at 12:17

43  SHARE ▼

Interview Internet services outfit Cloudflare took careful aim and unloaded both barrels at its feet yesterday, taking out a large chunk of the internet as it did so.

In an impressive act of openness, the company posted a distressingly detailed [post-mortem](#) on the cockwombly that led to the outage. *The Register* also spoke to a weary John Graham-Cumming, CTO of the embattled company, to understand how it all went down.

This time it wasn't [Verizon wot dunnit](#); Cloudflare engineered this outage all by itself.

Cloud-dark

- New rules are deployed frequently to battle attacks
- Deployment of a single misconfigured rule
- Included regex to spike CPU to 100%
- “Affected region: Earth”

Continuous updates pattern: Progressive Delivery

- **Problem:** Releasing a bug affects ALL the users.
- **Solution:** Release to a small number of users first effectively reducing the blast radius and observe. If a problem occurs, stop the release, revert or update the affected users.

Continuous updates pattern: Observability

- **Problem:** Some problems are hard to trace relying on user feedback only
- **Solution:** Implement tracing, monitoring and logging

Continuous updates pattern: Rollbacks

- **Problem:** Fixes might take time, users suffer in the interim
- **Solution:** Implement rollback, the ability to deploy a previous version without delay

Continuous updates pattern: Feature Flags

- **Problem:** Rollbacks are not always supported by the deployment target platform
- **Solution:** Embed 2 versions of the features in the app itself and trigger them with API calls

APPS ENTERTAINMENT FILM

MoviePass has shut down for 'several weeks' to update its app

21

'There's never a good time to have to do this'

By Jon Porter | @JonPorty | Jul 5, 2019, 12:04pm EDT

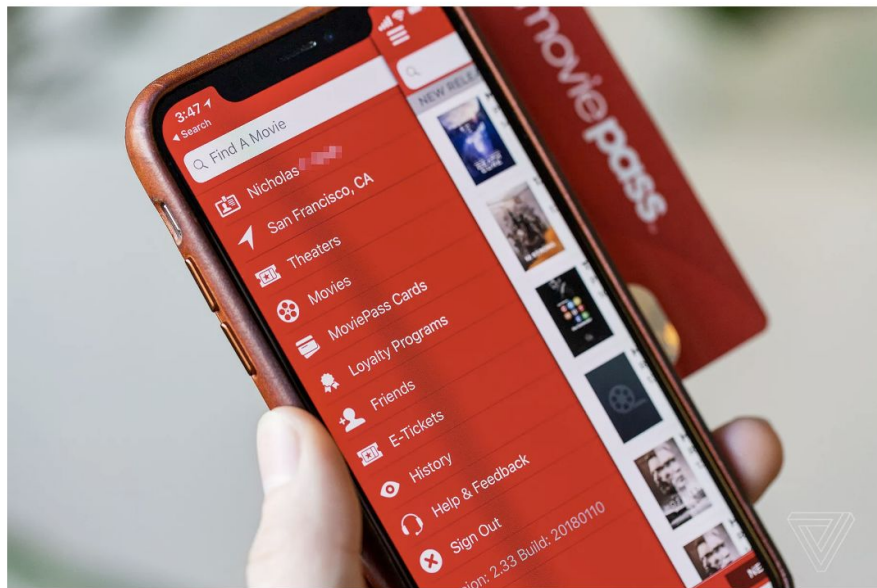


Photo by Vjeran Pavic / The Verge

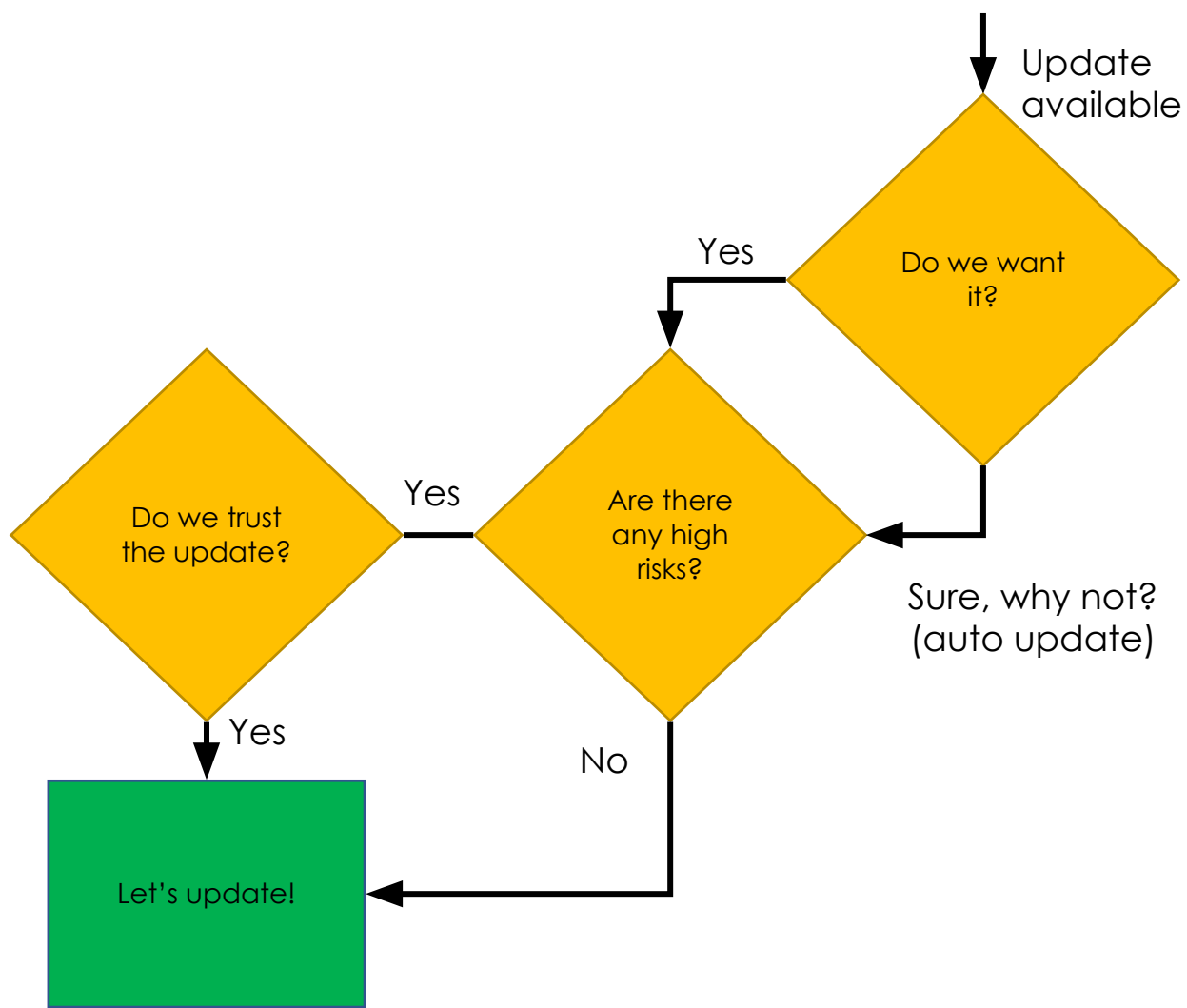
MoviePass, the [long-embattled film subscription service](#), has shut down for "several weeks" in order to complete work on an updated version of its app and to recapitalize for when the service relaunches. "There's never a good time to have to do this," MoviePass CEO Mitch Lowe said in a [statement](#), "but to complete the improved version of our app, one that we believe will provide a much better experience for our subscribers, it has to be done." Lowe's statement promised "an enhanced technology platform, which is in the final stages of completion," in the upcoming app.

Continuous updates pattern: Zero Downtime Updates

- **Problem:** You will probably lose all your users if you shut down for 5 weeks to perform an update.
- **Solution:** Perform zero-downtime OTA small and frequent continuous updates.

CONTINUOUS UPDATES

- Frequent
- Automatic
- Tested
- Progressively delivered
- State-aware
- Observability
- ✧ Local Rollbacks





KubeCon



CloudNativeCon

Europe 2020



HELM

Virtual



KEEP CLOUD NATIVE

CONNECTED

