



KubeCon



CloudNativeCon

North America 2018

SIG-AWS Status & Roadmap

@d-nishi, Nishi Davidson, AWS Container Services OSS SDM

@justinsb, Justin SB, Google SDE



Summary



KubeCon



CloudNativeCon

North America 2018

- Goals:
 - Kubernetes integrations, interfaces, libraries, tools for all AWS services (IAM, storage, networking, loadbalancers, registry, security, monitoring/logging at the instance/container level)
 - Prow, Testgrid integrations for CI signal
 - Perf Dashboard for Scale testing signal
 - User group support for issues and feature requests
 - Documentation for all things Kubernetes on AWS
- Hosts 5 subprojects: <https://github.com/kubernetes/community/tree/master/sig-aws#subprojects>
- SIG Chairs: @d-nishi; @justinsb; @kris-nova
- SIG AWS Charter: <https://github.com/kubernetes/community/blob/master/sig-aws/charter.md>



KubeCon



CloudNativeCon

North America 2018

Subprojects launched in Kubernetes 1.13



aws-alb-ingress-controller - Status



KubeCon



CloudNativeCon

North America 2018

<https://github.com/kubernetes-sigs/aws-alb-ingress-controller>

What we did:

- Alpha released in Q4 '18, k8s v 1.13.
- Stabilized support for IP target mode (routes traffic directly from ALB to pod IP without Nodeport hop).
- Re-factored code to use controller-runtime library and to add aws sdk level caching.
- Added e2e test cases. Add CI signal under <https://testgrid.k8s.io/>
- Added more docs about setup/configure ingress controller.

What we plan to do:

- Add support to share one ALB across ingresses in different namespaces (Q1 '19)
- Propose adding the controller in out-of-tree ccm

Contact: @M00nF1sh, @bigkraig, @dnishi

Kubernetes Ingress



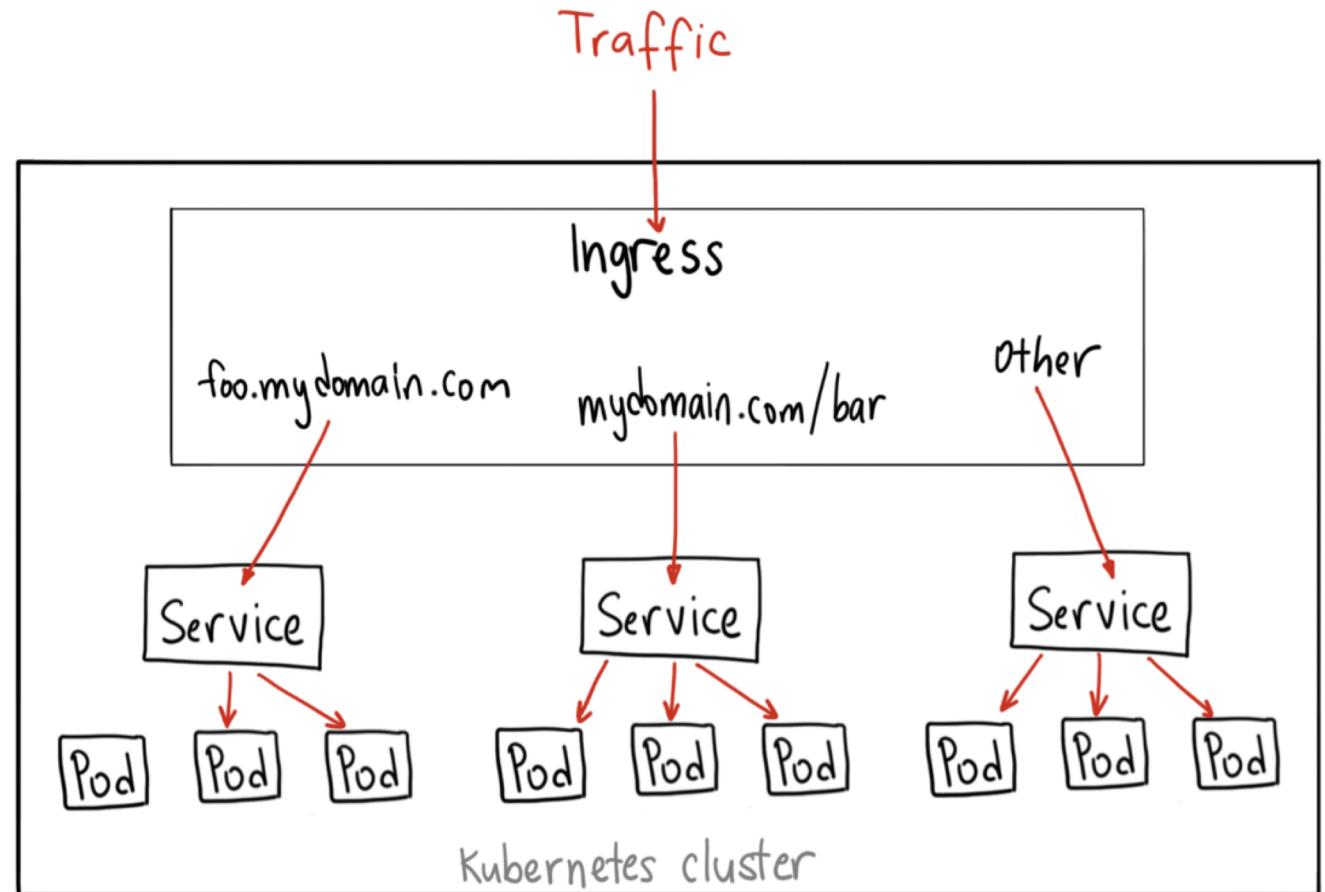
KubeCon



CloudNativeCon

North America 2018

- Sits in front of multiple services.
- Acts as a “smart router” or entry point for http(s) traffic into the cluster
- Many implementations: ALB, Nginx, F5, HAProxy etc
- Default Service Type: ClusterIP



aws-alb-ingress-controller - Design



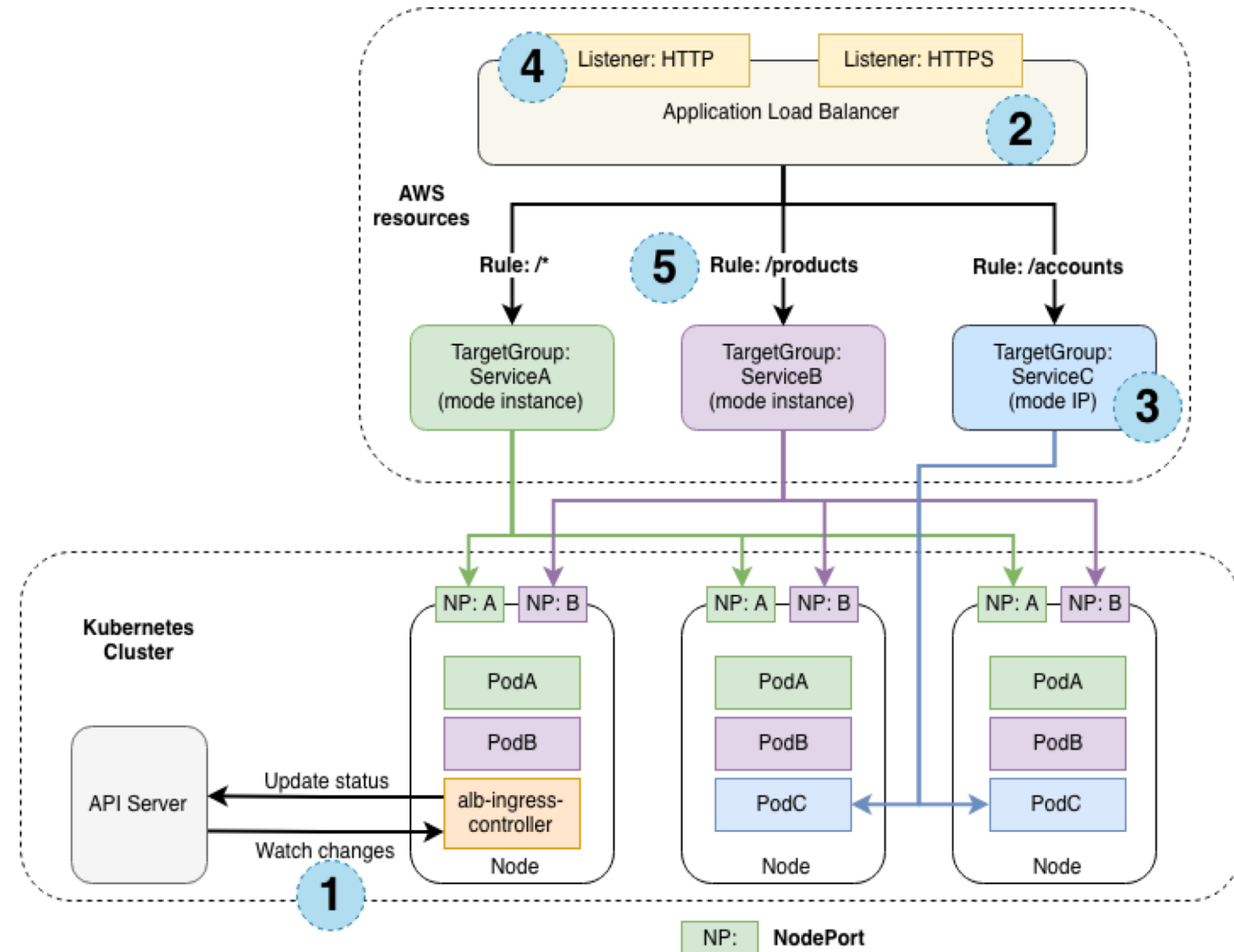
KubeCon



CloudNativeCon

North America 2018

- Runs on the worker nodes.
- Enables host/path based routing, TLS termination, WebSockets, HTTP/2, AWS WAF integration, access logs, health checks
- Supports two traffic modes:
 - **instance mode:** Traffic starts from the ALB, reaches the [NodePort](#) for the service and is then routed to the Pods.
 - **ip mode:** Traffic starts from the ALB and reaches the Pods directly. Used with [AWS CNI plugin for Kubernetes](#)



aws-alb-ingress-controller - Demo



KubeCon



CloudNativeCon

North America 2018

Demo

aws-ebs-csi-driver - Status



KubeCon



CloudNativeCon

North America 2018

<https://github.com/kubernetes-sigs/aws-ebs-csi-driver>

What we did:

- Alpha released in Q4 '18, k8s v 1.13. Compatible with CSI 0.3.0 spec
- Actively developing features to reach parity with in-tree volume controller design
 - Added storage class parameters: fsType, volume type, encrypted volume, etc
 - Added volume scheduling support
 - CI signal is reported under: <https://testgrid.k8s.io/sig-aws-ebs-csi-driver>
 - Next step: basic integration testing (only the driver on EC2 instance)

What we plan to do:

- CSI Migration for AWS EBS Driver in-progress. Targeting Q4 '19 to complete the work.

Contact: @leakingtapan, @bertinatto, @d-nishi, @jsafrane

aws-ebs-csi-driver - Design



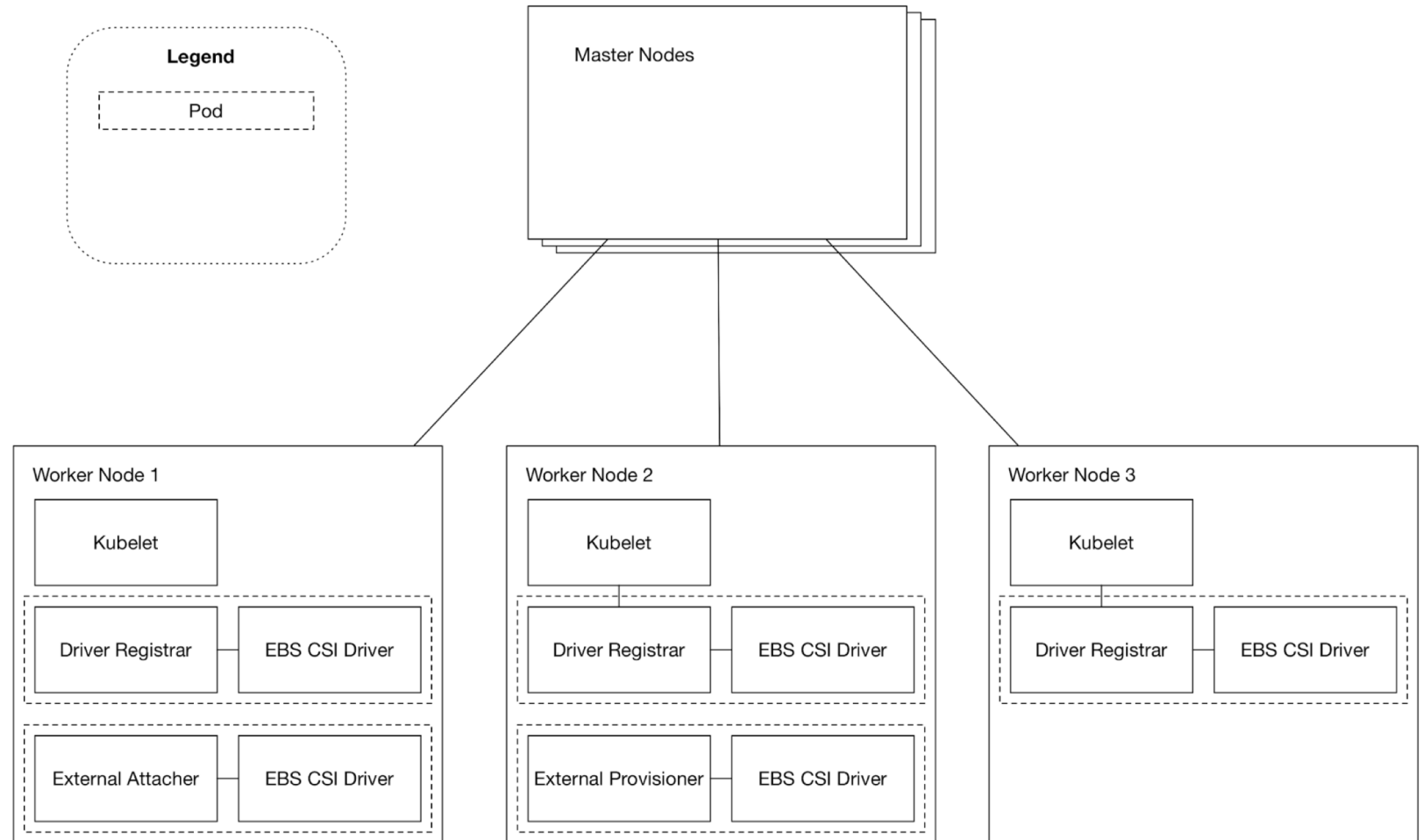
KubeCon



CloudNativeCon

North America 2018

Runtime Deployment of the driver



aws-ebs-csi-driver - Demo



KubeCon



CloudNativeCon

North America 2018

Demo

external cloudprovider-aws - Status



In-tree CCM:

- Add e2e tests for aws.
- Maintain until out-of-tree ccm is GA (Q3 '19).
- Deprecation period of 2 releases planned (Q3 '19).

Out-of-tree CCM:

- Alpha released in Q4 '18, k8s v 1.13.
- Extract cloud-provider-aws from k/k
- Move cloudprovider dependencies from k/k to k/Utils and staging
- Scope testing for out-of-tree ccm.
- Integrate CI signal in testgrid <https://testgrid.k8s.io/>

Contact: @mcrute, @dnishi

external cloudprovider-aws



KubeCon



CloudNativeCon

North America 2018

Demo

aws-k8s-tester - Status



What we did:

- Implements kubetest deployer interface (k8s.io/test-infra/kubetest)
- Creates an ephemeral EKS cluster to run Kubernetes e2e tests as periodic jobs
- Will be used for SIG AWS subproject CI signal and e2e tests

What we will do:

- Implement etcd conformance tests with Kubernetes
- Integrate with cluster-api work to standardize testing

Contact: @gyuho, @d-nishi

SIG Process Improvements



KubeCon



CloudNativeCon

North America 2018

- Subproject Election through formal KEPS:
<https://github.com/kubernetes/community/tree/master/keps/sig-aws>
- Subproject election process through lazy consensus followed by formal PR [Contact: @d-nishi]
- How can you get involved?
 - Formal Issue tracking and closure by AWS engineers: <https://github.com/orgs/K8s-AWS-Issues/teams/github-issues>
 - Pick issues labeled “Easy” or “Medium” to get started.
- Members & Approvers from AWS now include:
 - @crutem, @M00nf1sh, @gyuho, @shyamjvs, @leakingthepan, @d-nishi, @nckturner, @mattlandis



KubeCon



CloudNativeCon

North America 2018

Other projects



aws-encryption-provider - Status



KubeCon



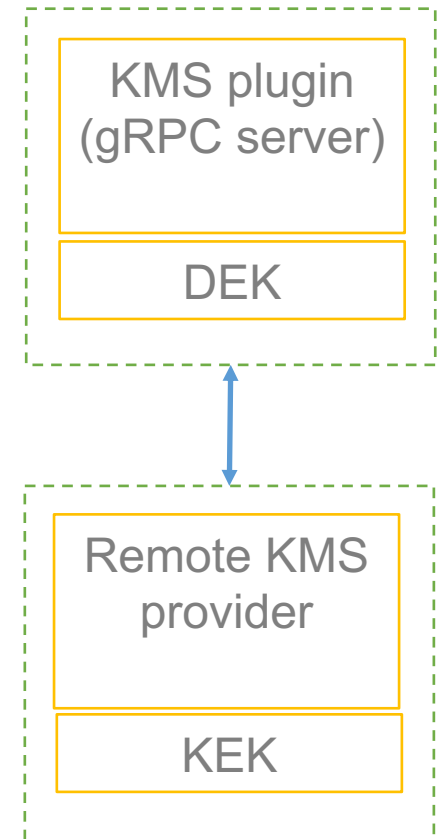
CloudNativeCon

North America 2018

<https://github.com/kubernetes-sigs/aws-encryption-provider>

Status: Existing subproject

- Alpha in k8s v1.10. Requires etcd v3
- Integrates AWS-KMS-plugin with KMS provider on k8s control plane.
- Enables envelope encryption of data in etcd.
- Stores & manages config. data, auth. credentials independently.
- Design and Scale discussions pending AWS KMS teams.
- Testing and Documentation integration with upstream pending.
- *ASK: Use cases, User experience fb and Issues needed from users*



aws-iam-authenticator - Status



KubeCon



CloudNativeCon

North America 2018

<https://github.com/kubernetes-sigs/aws-iam-authenticator>

Status: Existing subproject

- Beta/GA in k8s v1.14.
- Uses AWS IAM credentials to authenticate to a Kubernetes cluster.
- Modifying current configmap implementation to CRD is pending.
- Testing and Documentation integration with upstream pending.

cluster-api-aws – Status



KubeCon



CloudNativeCon

North America 2018

<https://github.com/kubernetes-sigs/cluster-api-provider-aws>

Status: Co-owned subproject with SIG Cluster Lifecycle (@

- Alpha in k8s v1.13.
- Standardizes bootstrapping of a Kubernetes cluster using best practices from KOPS, KUBICORN
 - Boots VPCs, gateways, security groups and instances.
 - Supports Amazon Linux 2, CentOS 7 and Ubuntu 18.04, using [pre-baked AMIs](#).
 - Deploys Kubernetes control planes into private subnets with a separate bastion server.
 - Doesn't use SSH to bootstrap nodes.
 - Installs minimal components to bootstrap a control plane and workers.
 - Currently supports control planes on EC2 instances.
- *ASK: Feedback on User experience and Issues from testing needed from users (also for EKS)*

eksctl - Status



KubeCon



CloudNativeCon

North America 2018

<https://github.com/weaveworks/eksctl>

Status: Proposed Subproject (@errordeveloper)

- CLI tool to create Amazon EKS clusters.
- Written in Go, and uses CloudFormation.
- Creates a cluster in minutes with one command – **eksctl create cluster**

etcd - Status



KubeCon



CloudNativeCon

North America 2018

<https://github.com/etcd-io/etcd>

Status: Related project. CNCF Incubating project actively maintained by AWS (@gyuho)

- Future roadmap of etcd from the maintainers: <blog link>
- Summary of roadmap updates
 - Support non-voting member, improve membership reconfiguration
 - Support downgrade
 - Improve conformance testing with Kubernetes control plane

2019 Plan as of 11/12/2018

**subject to changes*

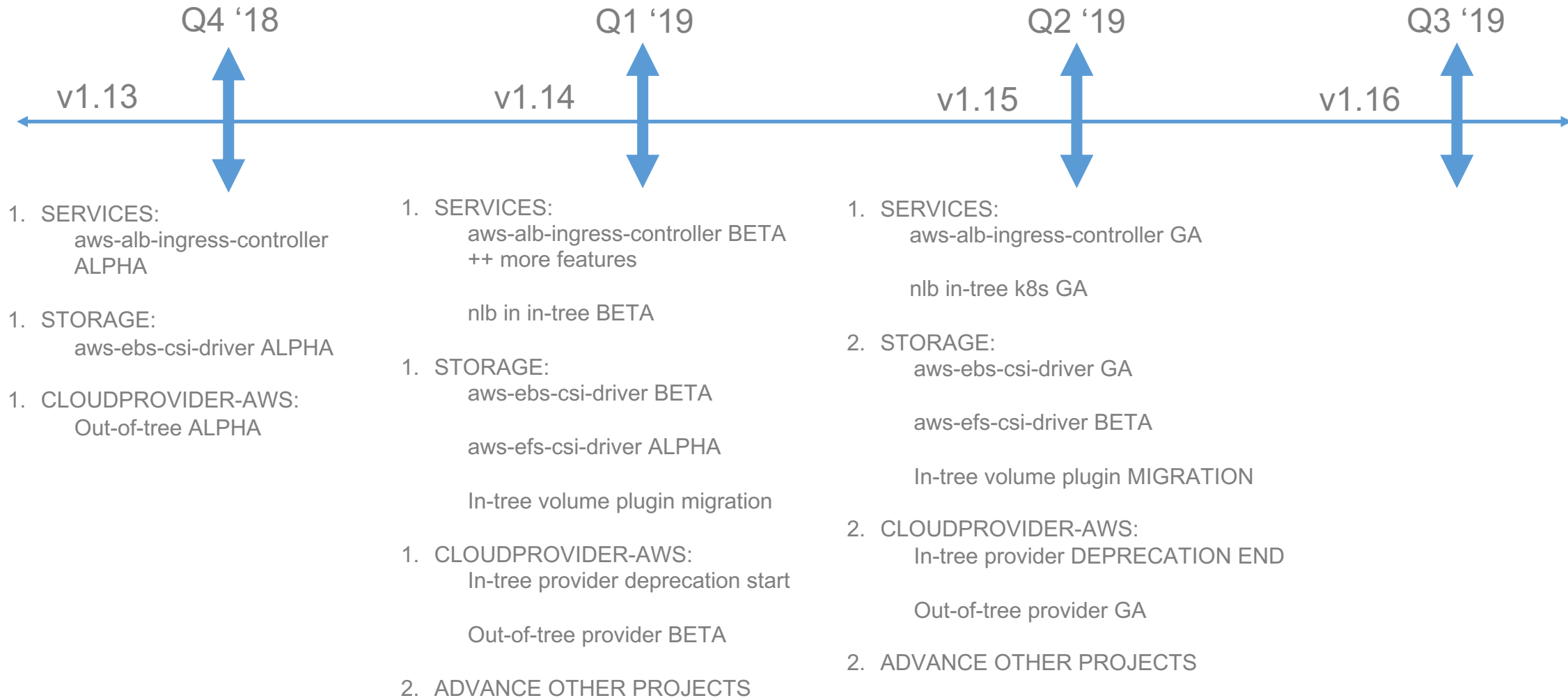


KubeCon



CloudNativeCon

North America 2018





KubeCon

CloudNativeCon

————— **North America 2018** —————

