

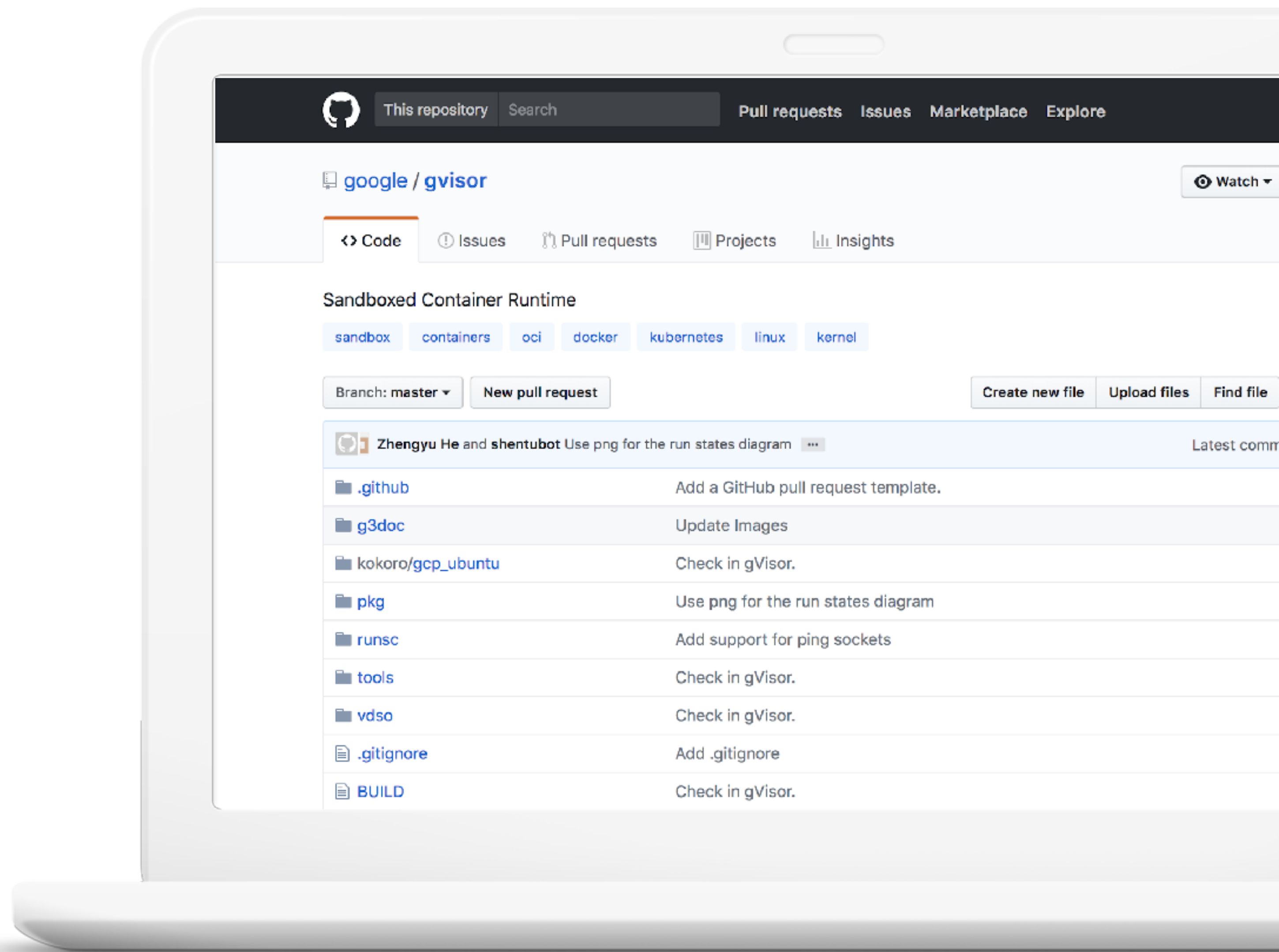


Craig Box,
Kubernetes Advocacy Lead

Cloud Native Observability & Security

Google Cloud

gVisor



```
root@dirty-cow:/home/kubecondemo/tmp/pokemon-oci-runc# ls -lh
```

```
total 8.0K
```

```
-rw-r--r--  1 root root 2.7K May  2 07:17 config.json
```

```
drwxr-xr-x 22 root root 4.0K May  2 07:17 rootfs
```

```
root@dirty-cow:/home/kubecondemo/tmp/pokemon-oci-runc# head -n20 config.json
```

```
{
  "ociVersion": "1.0.0",
  "process": {
    "terminal": true,
    "user": {
      "uid": 1000,
      "gid": 1000
    },
    "args": [
      "/dirtycow.github.io/pokemon",
      "/etc/passwd",
      "spam"
    ],
    "env": [
      "PATH=/usr/local/sbin:/usr/local/bin:/usr/sbin:/usr/bin:/sbin:/bin",
      "TERM=xterm"
    ],
    "cwd": "/",
    "capabilities": {
      "bounding": [
```

```
root@dirty-cow:/home/kubecondemo/tmp/pokemon-oci-runc#
```

```
root@dirty-cow:/home/kubecondemo/tmp/pokemon-oci-runsc# ls -lh
```

```
total 8.0K
```

```
-rw-r--r-- 1 root root 2.7K May  2 07:17 config.json
```

```
drwxr-xr-x 22 root root 4.0K May  2 07:17 rootfs
```

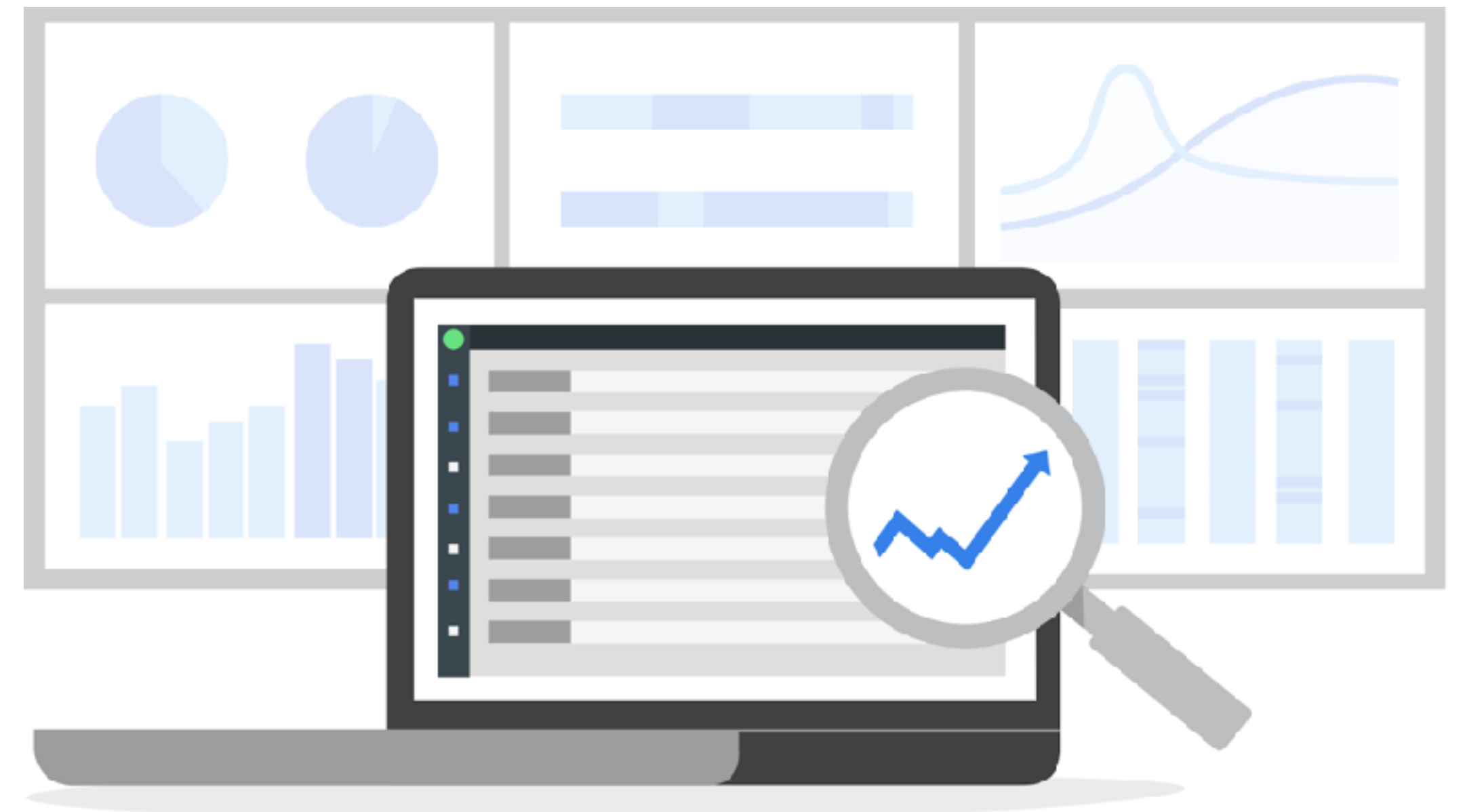
```
root@dirty-cow:/home/kubecondemo/tmp/pokemon-oci-runsc# head -n20 config.json
```

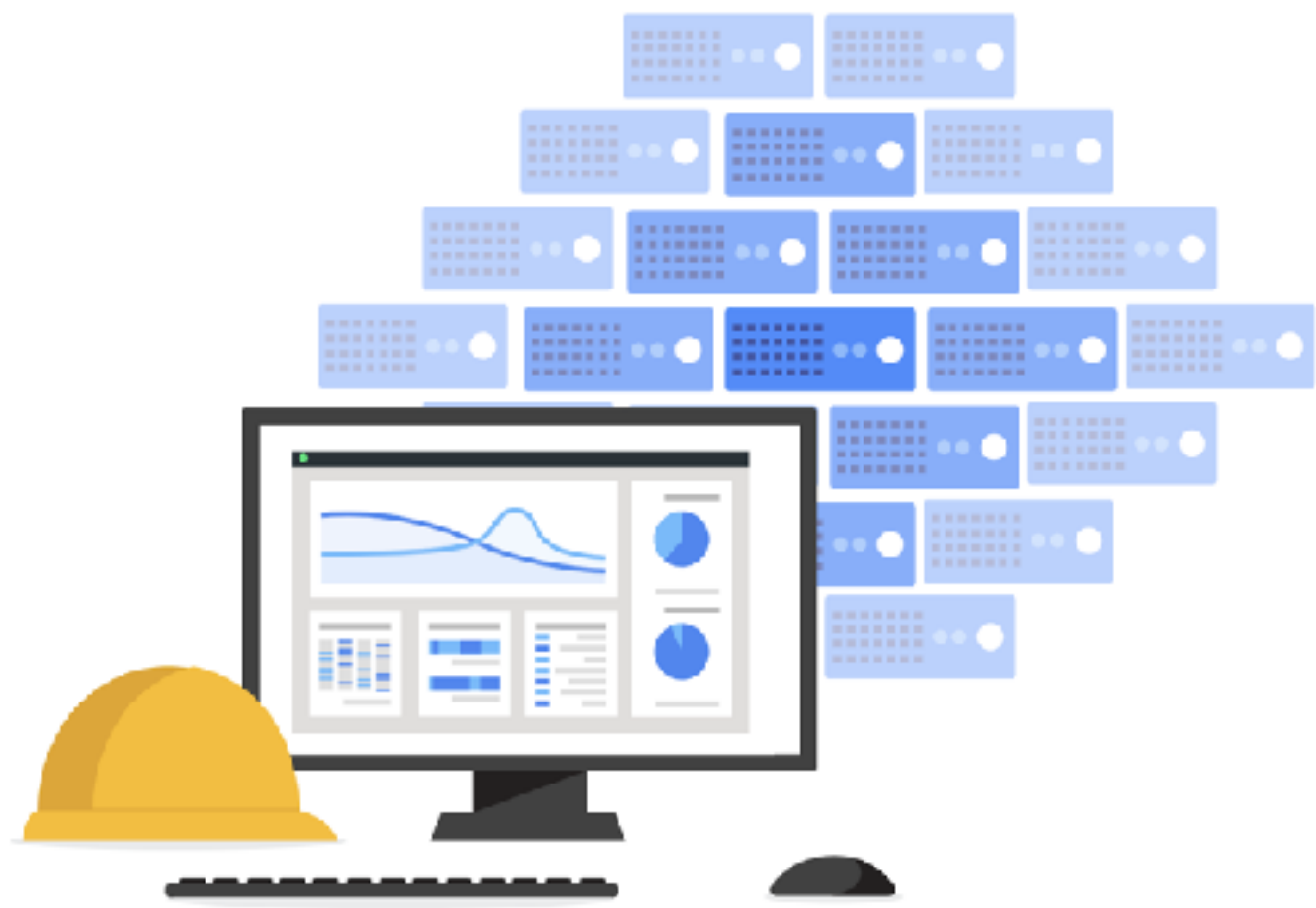
```
{
  "ociVersion": "1.0.0",
  "process": {
    "terminal": true,
    "user": {
      "uid": 1000,
      "gid": 1000
    },
    "args": [
      "/dirtycow.github.io/pokemon",
      "/etc/passwd",
      "spam"
    ],
    "env": [
      "PATH=/usr/local/sbin:/usr/local/bin:/usr/sbin:/usr/bin:/sbin:/bin",
      "TERM=xterm"
    ],
    "cwd": "/",
    "capabilities": {
      "bounding": [
```

```
root@dirty-cow:/home/kubecondemo/tmp/pokemon-oci-runsc#
```



Stackdriver Kubernetes Monitoring

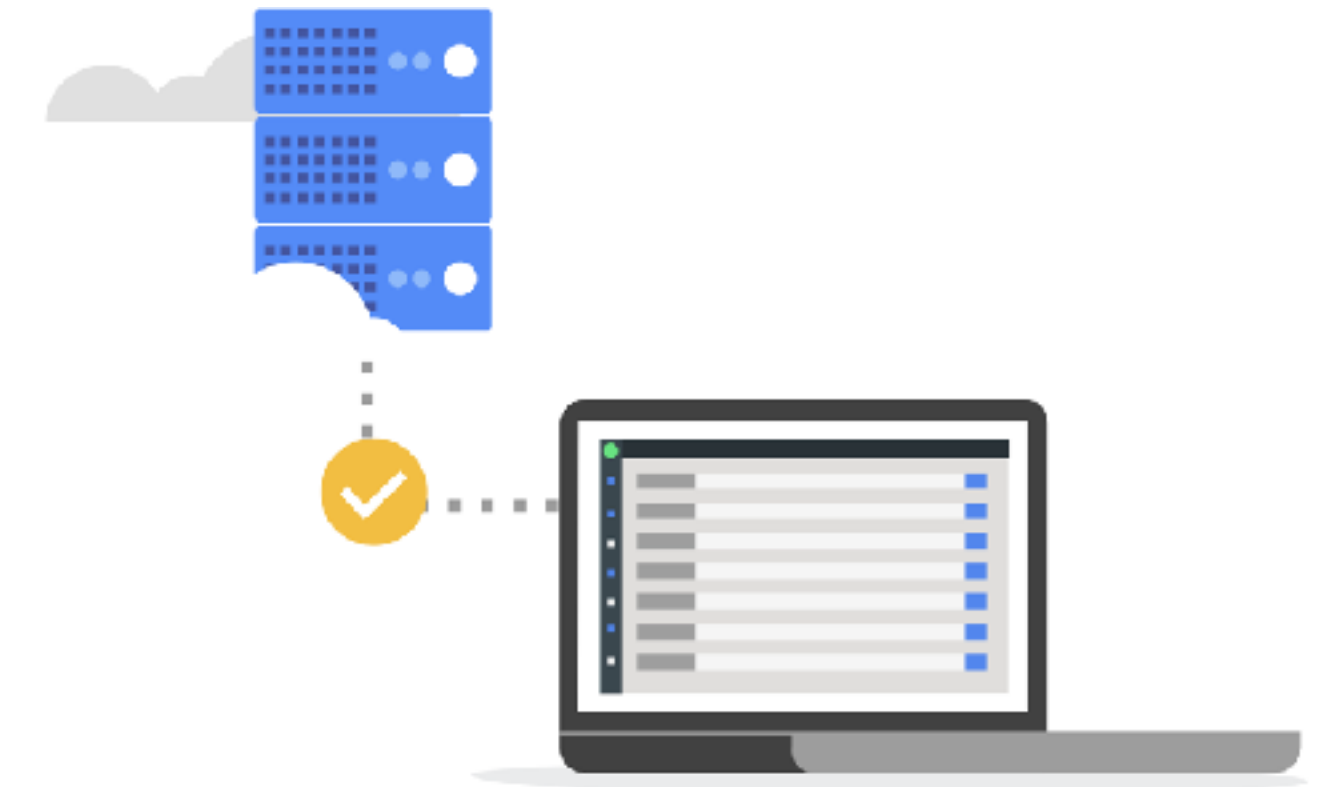




**Observability
at scale**



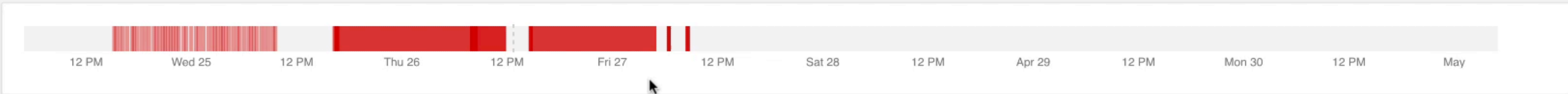
**Prometheus
support**



**Works
anywhere**

Kubernetes

TIME 1h 6h 1d 1w 1m 6w custom



Infrastructure Workloads Services

NAME	RESOURCE TYPE	READY	INCIDENTS	CPU UTILIZATION	MEMORY UTILIZATION
▶ ● helloworld-prometheus	Cluster	15	✓	0 ✓ 2.00 3%	0.45B
▼ ● petclinic-cluster	Cluster	45	✓	0 ✓ 12.00 5%	0.41B
▶ ● gke-petclinic-cluster-default-pool	Node	6	✓	0 ✓ 2.00 5%	0.50B
▼ ● gke-petclinic-cluster-default-pool	Node	7	✓	0 ✓ 2.00 3%	0.39B
▼ ● customers-service-c5b4cdb49-i	Pod		✓	0 ✓ 0.20 2%	0.79B
▶ ● customers-service	Container			0 ✓ 2.00 2%	0.79B
▶ ● kube-proxy-gke-petclinic-cluste	Pod		✓	0 ✓ 0.10 4%	
▶ ● shell-demo	Pod		✓	0 ✓ 0.10 0	0
▶ ● stackdriver-metadata-agent-lrtr	Pod		✓	0 ✓ 0.10 4%	0.02B
▶ ● visits-service-6779fcf4f4-8c7nt	Pod		✓	0 ✓ 0.20 2%	0.73B
▶ ● istio-pilot-67d6ddbdf6-qgm44	Pod		✓	0 ✓ No data is availabl...	0
▶ ● gke-petclinic-cluster-default-pool	Node	9	✓	0 ✓ 2.00 5%	0.55B
▶ ● gke-petclinic-cluster-default-pool	Node	7	✓	0 ✓ 2.00 5%	0.43B
▶ ● gke-petclinic-cluster-default-pool	Node	6	✓	0 ✓ 2.00 4%	0.44B
▶ ● gke-petclinic-cluster-default-pool	Node	10	✓	0 ✓ 2.00 5%	0.07B



Metrics Explorer

1h 6h 1d 1w 1m 6w

METRIC VIEW OPTIONS

Find resource type and metric ?

instance, cpu usage, etc.

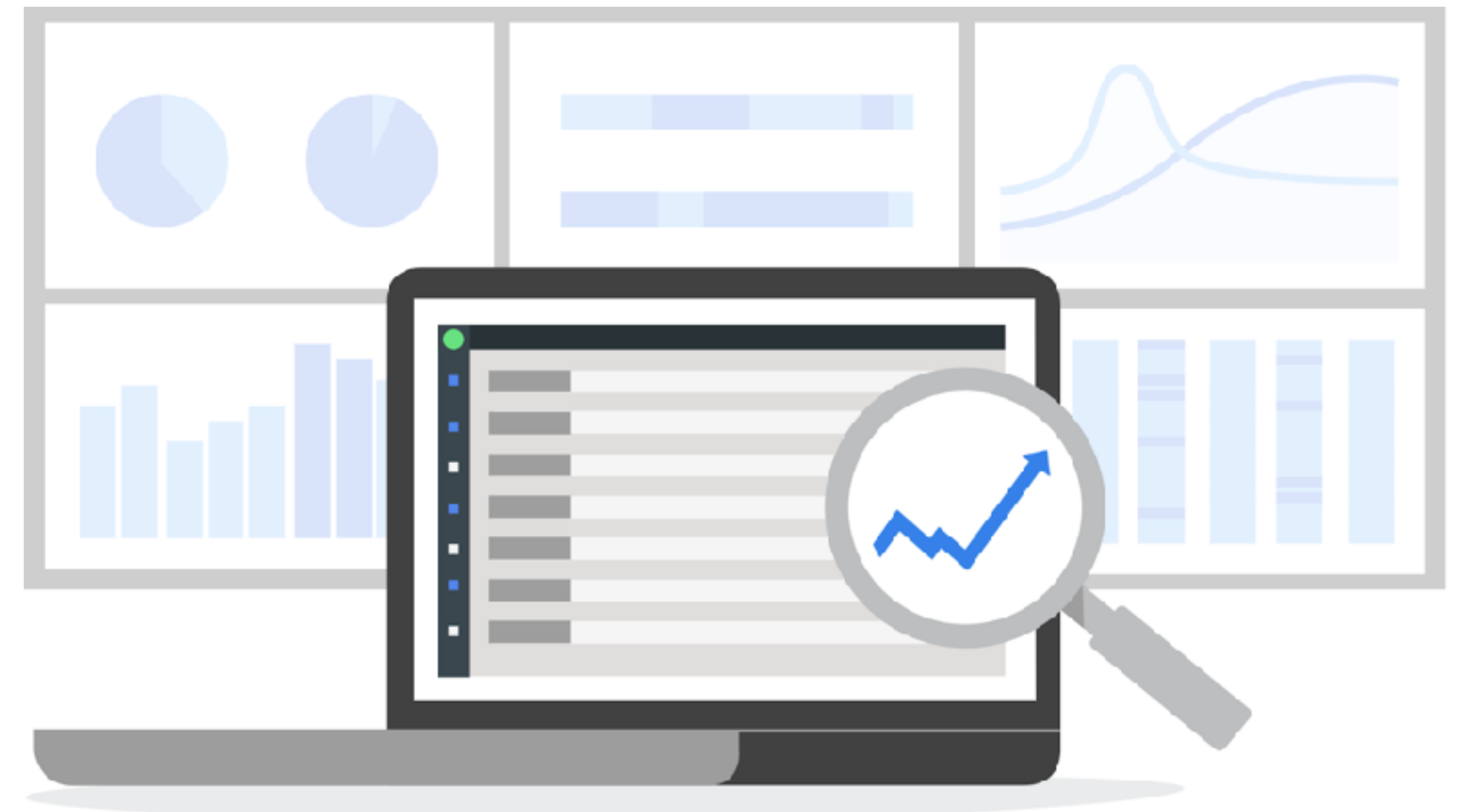
+ ADD METRIC



Select a metric to start

6:20 6:25 6:30 6:35 6:40 6:45 6:50 6:55 7 AM 7:05 7:10 7:15

Stackdriver Kubernetes Monitoring





Kubernetes Podcast

from Google



Listen on
Apple Podcasts



Listen on Google
Play Music



Craig Box,
Kubernetes Advocacy Lead

Thank you
g.co/kubecon

Google Cloud