



P I P E

USER MANUAL

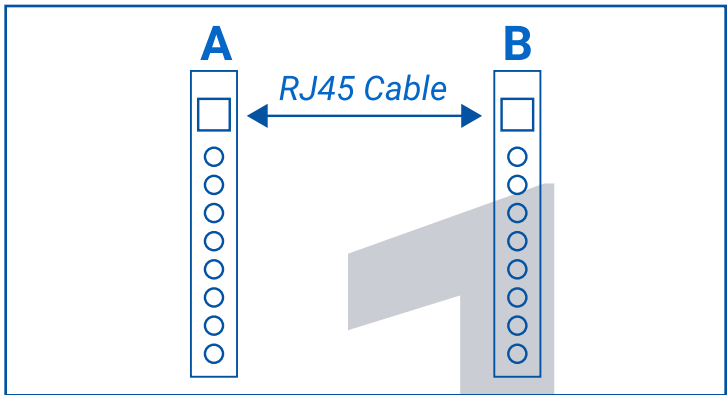
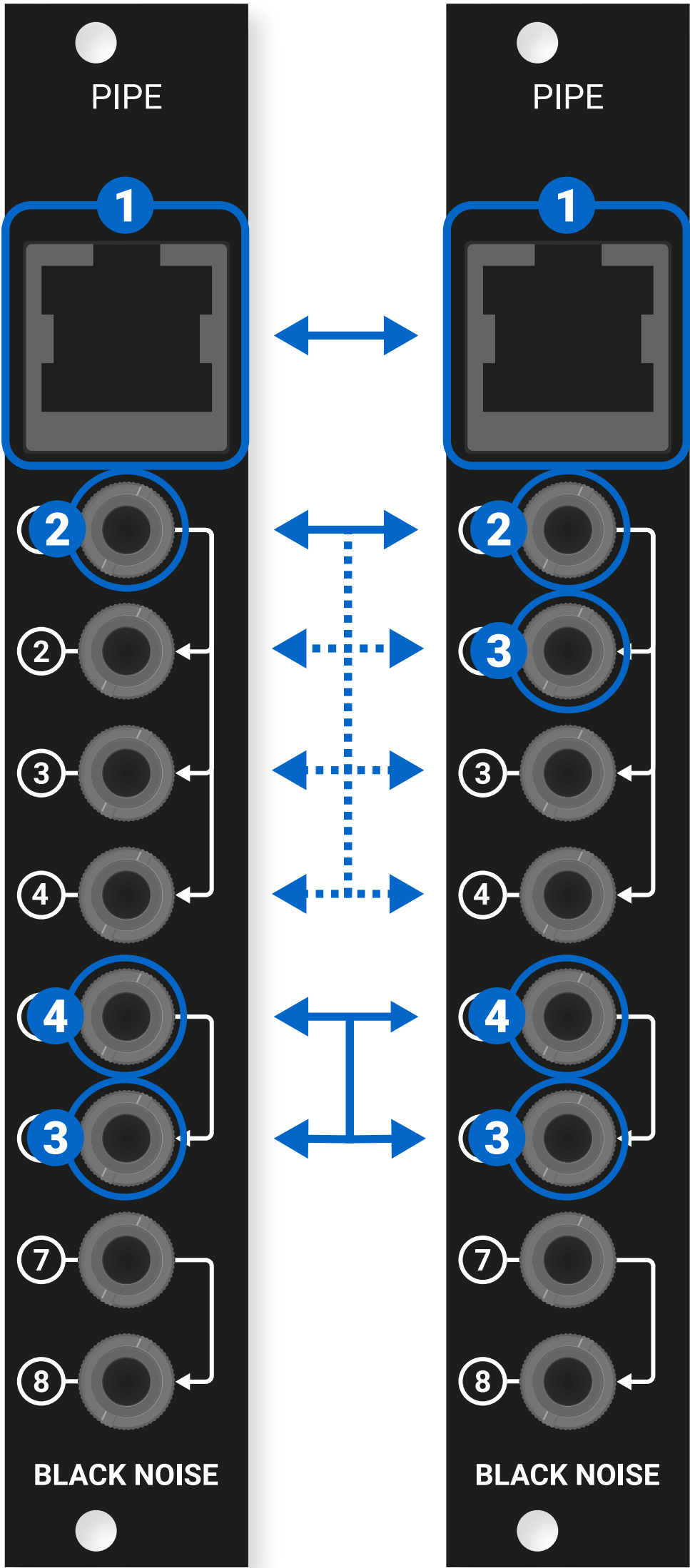
THANKS YOU

*Thanks for supporting BLACK NOISE.
Your module have been designed and assembled with love
and care in France.
We hope you will enjoy your module as much as we are.*

OVERVIEW

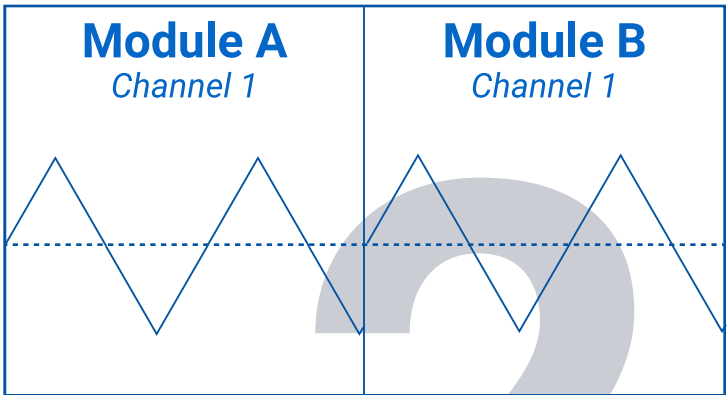
FRONT PLATE

PIPE



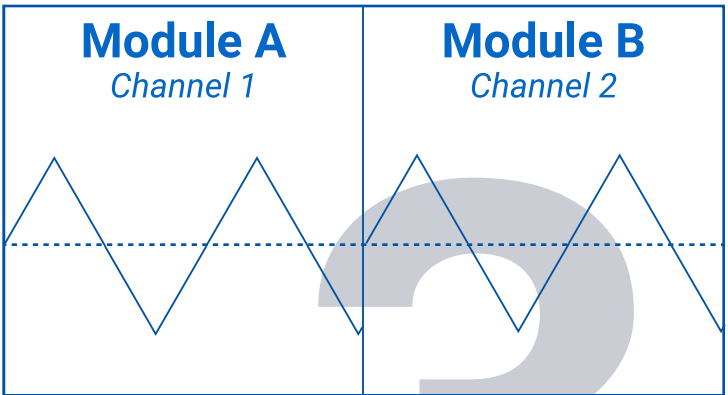
RJ45 CONNECTOR

Plug a RJ45 cable also known as Ethernet cable to connect modules as a pair. There is not input or output module, simply connect one side of the cable to one module and the other side to the other module.



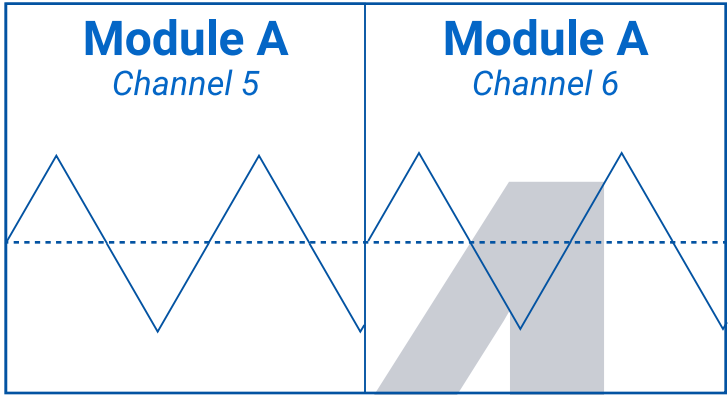
CHANNELS

Pipe can be used to send signals from one case to another or from one row to another. Each module offers 8 channels. You can send 8 audio/cv signals or use it as a passive multiple.



PASSIVE MULTIPLES

Channel 2-3-4 are normalized to channel 1. For example, if nothing is plugged into channel 2 of module A, Channel 2 of module B will be a copy of Channel 1 from either module A or module B.



NORMALIZATION

Channel 6 is normalized to channel 5 on both modules. The same routing is applied to channels 7 & 8 as shown on the panel.

WARNING

Be sure to use *Straight-Thru* RJ45 cable. If you use *Crossover* cable, channels will be mixed up.

Using *Crossover* cable won't cause any damage to the module, but it won't work as expected. If you notice any mixing in channels, make sure you use *Straight-Thru* RJ45 cable.

GENERAL SPECIFICATIONS

PANEL WIDTH : 4HP per module

MODULE DEPTH : 20mm

POWER CONSUMPTION :

PIPE is a passive module and therefore it doesn't need to be powered.

WARRANTY

BLACK NOISE guarantees its products to be free of defects in materials or construction for a period of two years from the date of purchase.

Malfunction resulting from wrong power supply voltages, backwards or reversed eurorack bus board cable connection, abuse of the product or any other causes determined by *BLACK NOISE* to be the fault of the user are not covered by this warranty, and normal service rates will apply.

During the warranty period, any defective products will be repaired or replaced, at the option of *BLACK NOISE*, the postage to *BLACK NOISE*-customer service is on the customer. The return of your module is on us.